

# 050-0600 Single Rotor Compartment Latch



## **DESIGNED FOR:**

- Light to medium duty compartment doors, access panels and hoods for off-highway vehicle applications
- Applications where it is desirable to have a single rotor latch that offers robust construction and compact size for a very cost effective price

## **FEATURES/BENEFITS:**

- Compact size
- Use with 12mm diameter striker or standard bar stock
- Mounts with (2) M8 X 1.25 fasteners (not included)
- Threaded axle version provides ease of installation

## **Global Locations:**

**TriMark Corporation**  
500 Bailey Avenue  
P.O. Box 350  
New Hampton, Iowa 50659  
United States  
Tel: 641-394-3188  
Fax: 641-394-2392  
1-800-447-0343  
[www.trimarkcorp.com](http://www.trimarkcorp.com)

**TriMark Europe**  
Cedar Court  
Walker road  
Bardon Hill  
Coalville LE67 1TU  
United Kingdom  
Tel: +44(0)1530 512460  
Fax: +44(0)1530 512461  
[www.trimarkeu.com](http://www.trimarkeu.com)

**TriMark (Xuzhou)**  
Building A5 Jingwu Road  
Xuzhou Economic  
Development Zone  
Xuzhou, Jiangsu  
221004 PR China  
Tel: +86 516 8773 0018  
Fax: +86 516 8773 0058  
[www.trimarkcn.com](http://www.trimarkcn.com)



TriMark. Interactive. Product. Selector



TriMark



TriMark Corporation

### AVAILABLE:

- Right or left hand configurations (left hand shown)
- Single or two position rotary style latching function
- Several standard release actuators are available

### MATERIAL:

- Case and actuator: high strength steel
- Springs: non-corrosive stainless steel

### FINISH:

- Zinc plated, clear chromate steel components

### INSTALLATION:

- Installed with (2) M8 X 1.25 bolts (not included)
- Tighten to the manufacturers' recommended torque value, however, do not exceed 22.2 N-m (180 in-lbs)

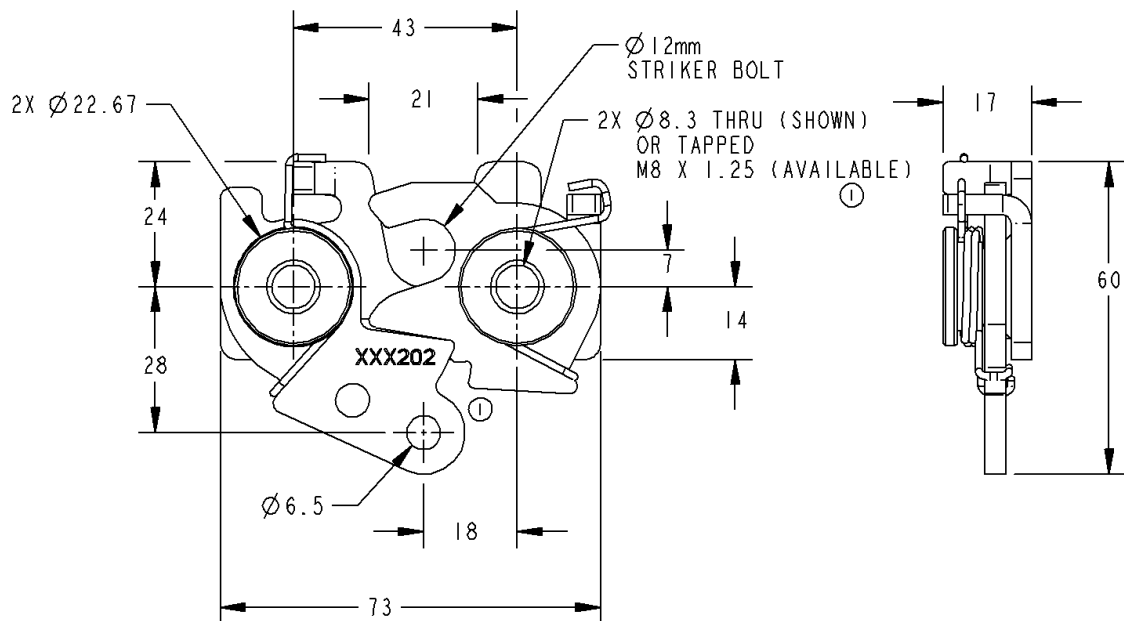
**CAUTION:** Latch does not meet FMVSS 206 load requirements.

Individual part dimensions are for reference only. Refer to individual part drawings for complete dimensions, specifications, and installation procedures. Engineering assistance and application drawings are available.

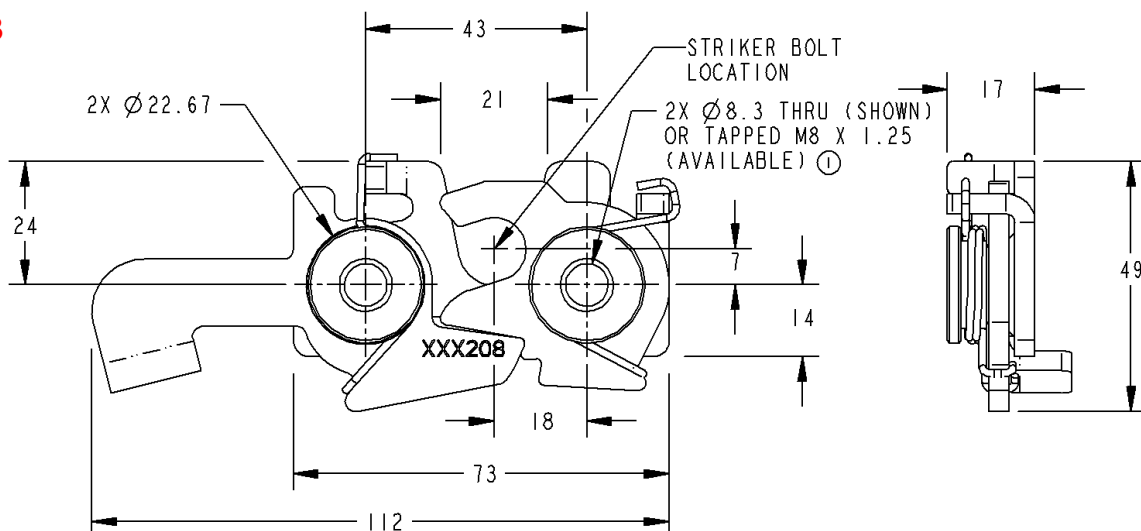
The following drawings show standard versions of the 050-0600 and do not depict all of the configurations available. Please refer to the website for additional information.

For more information visit  
[www.trimarkcorp.com](http://www.trimarkcorp.com)

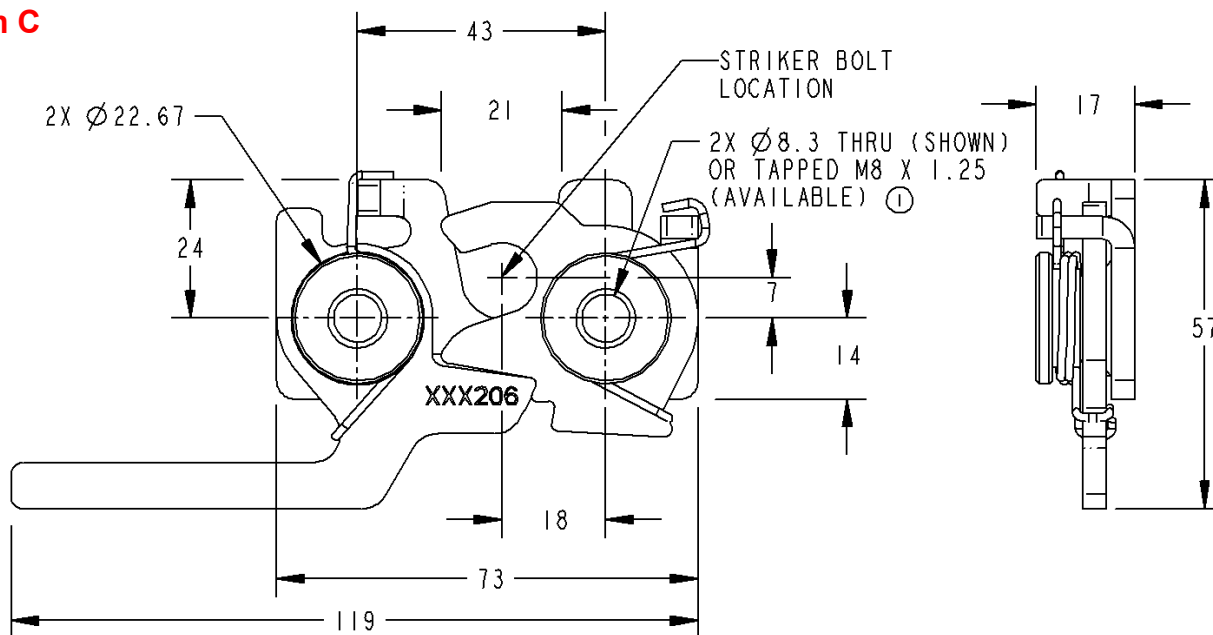
### Version A



### Version B



**Version C**



**Version D**

